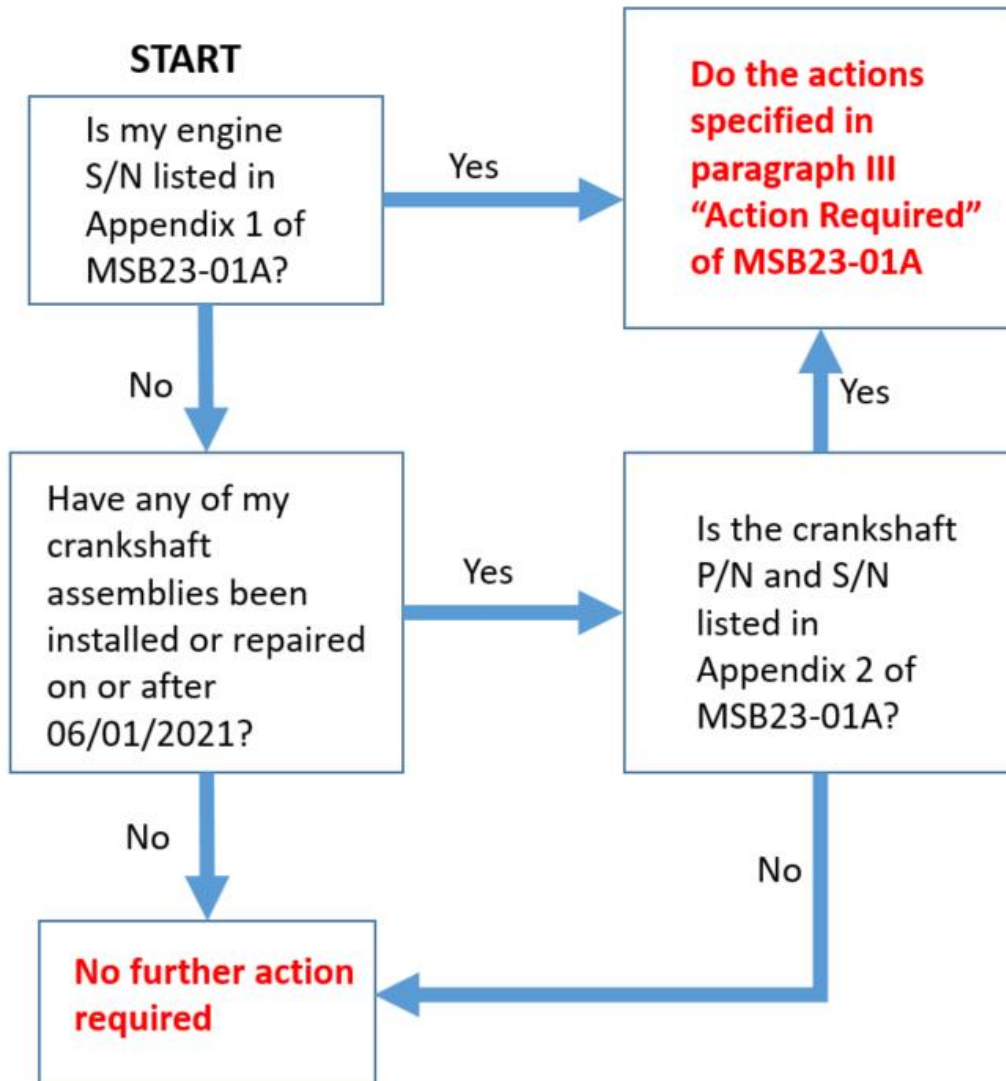


Below is a flowchart that assists in complying with AD 2023-05-16. Every Continental engine model listed in section (c) of the AD, titled “Applicability” is affected by this AD. However, every affected engine does not require the inspection detailed in Continental Aerospace Technologies Mandatory Service Bulletin MSB23-01A. Operators of affected engines can follow the flowchart below to determine whether their engine requires inspection:



This is a supplementary guide for Docket No. FAA-2023-0435. If there are any differences between this information and the AD, information contained in the AD shall take precedence.